

# Words Ending with the Sound /ee/ Spelt with 'y'



# The Sound /ee/ Spelt with 'y'

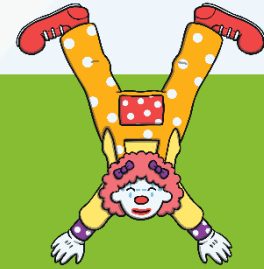
The sound /ee/ can be spelt 'ee'. But at the end of these words the sound /ee/ is spelt with the letter 'y'...



**very**



**happy**



**funny**



**party**



**family**



**dizzy**

# The Sound /ee/ Spelt with 'y'

The sound /ee/ can be spelt 'ee'. But at the end of these words the sound /ee/ is spelt with the letter 'y'...



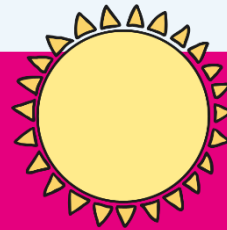
**smelly**



**jolly**



**silly**

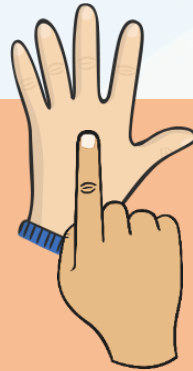


**sunny**

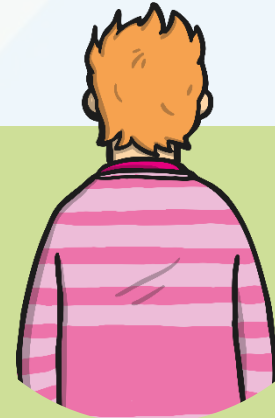
# The Sound /ee/ Spelt with 'y'



Can you air write 'y' with your finger?



Using your finger, can you write 'y' on the back of your hand?



Can you write either 'ee' or 'y' on a partner's back?

Can they tell what letters you have written?



# Watch Out!

There is often a **double letter** before a 'y' at the end of a word (like in happy, funny, dizzy, smelly, silly, jolly and sunny). But not always! These words do not have a double letter before the 'y'...



very



party



family

Can you write a sentence using all these words?

Here are this week's spellings to practise.

very

happy

funny

party

family

dizzy

smelly

silly

jolly

sunny



twinkl